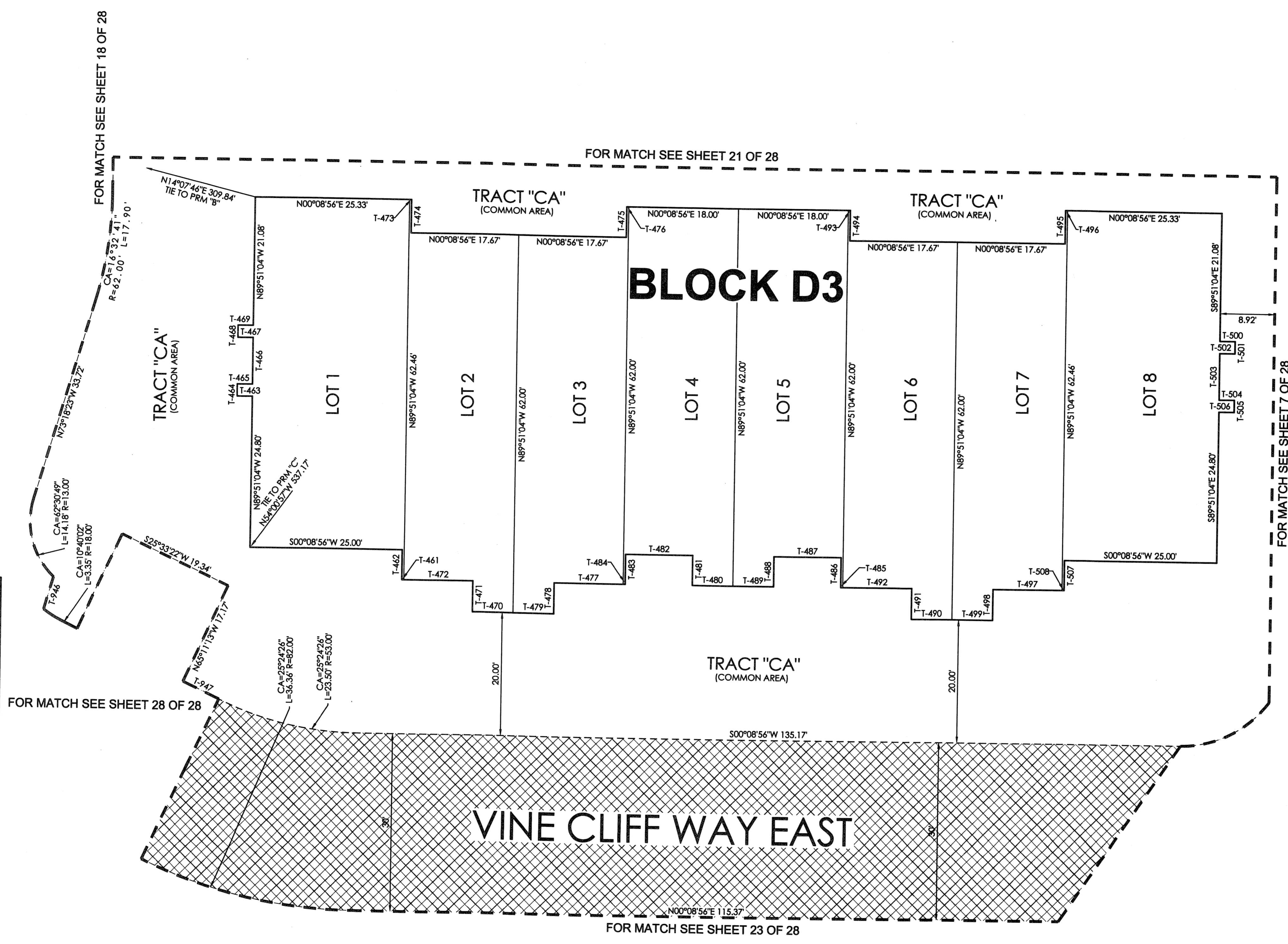
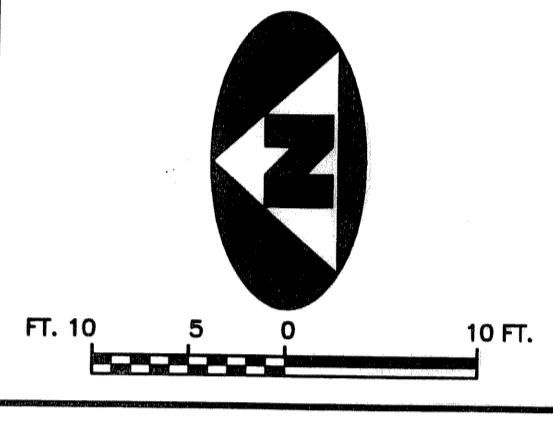


CIELO TOWNHOMES AT THE SHOPS OF DONALD ROSS

BEING A REPLAT OF TRACT "R", THE SHOPS OF DONALD ROSS REPLAT OF TRACT "A", RECORDED IN PLAT BOOK 103, PAGE 142, PUBLIC RECORDS, PALM BEACH COUNTY, FLORIDA AND LYING IN THE NORTHWEST ONE-QUARTER OF SECTION 25, TOWNSHIP 41 SOUTH, RANGE 42 EAST, CITY OF PALM BEACH GARDENS, PALM BEACH COUNTY, FLORIDA.

178



TANGENT TABLE

T-461	S00°08'56"W 0.33'
T-462	N89°51'04"W 5.00'
T-463	S00°08'56"W 2.50'
T-464	N89°51'04"W 2.00'
T-465	N00°08'56"E 2.50'
T-466	N89°51'04"W 7.58'
T-467	S00°08'56"W 2.50'
T-468	N89°51'04"W 2.00'
T-469	N00°08'56"E 2.50'
T-470	S00°08'56"W 6.67'
T-471	N89°51'04"W 5.00'
T-472	S00°08'56"W 11.33'
T-473	N00°08'56"E 0.33'
T-474	S89°51'04"E 5.46'
T-475	N89°51'04"W 5.00'
T-476	N00°08'56"E 0.33'
T-477	S00°08'56"W 11.33'
T-478	S89°51'04"E 5.00'
T-479	S00°08'56"W 6.67'
T-480	S00°08'56"W 6.67'
T-481	N89°51'04"W 5.00'
T-482	S00°08'56"W 11.00'
T-483	S89°51'04"E 5.00'
T-484	S00°08'56"W 0.33'
T-485	S00°08'56"W 0.33'
T-486	N89°51'04"W 5.00'
T-487	S00°08'56"W 11.00'
T-488	S89°51'04"E 5.00'
T-489	S00°08'56"W 6.67'
T-490	S00°08'56"W 6.67'
T-491	N89°51'04"W 5.00'
T-492	S00°08'56"W 11.33'
T-493	N00°08'56"E 0.33'
T-494	S89°51'04"E 5.00'
T-495	N89°51'04"W 5.46'
T-496	N00°08'56"E 0.33'
T-497	S00°08'56"W 11.33'
T-498	S89°51'04"E 5.00'
T-499	S00°08'56"W 6.67'
T-500	N00°08'56"E 2.50'
T-501	S89°51'04"E 2.00'
T-502	S00°08'56"W 2.50'
T-503	S89°51'04"E 7.58'
T-504	N00°08'56"E 2.50'
T-505	S89°51'04"E 2.00'
T-506	S00°08'56"W 2.50'
T-507	S89°51'04"E 5.00'
T-508	S00°08'56"W 0.33'
T-946	N73°18'23"W 5.48'
T-947	S25°33'22"W 6.55'

LEGEND

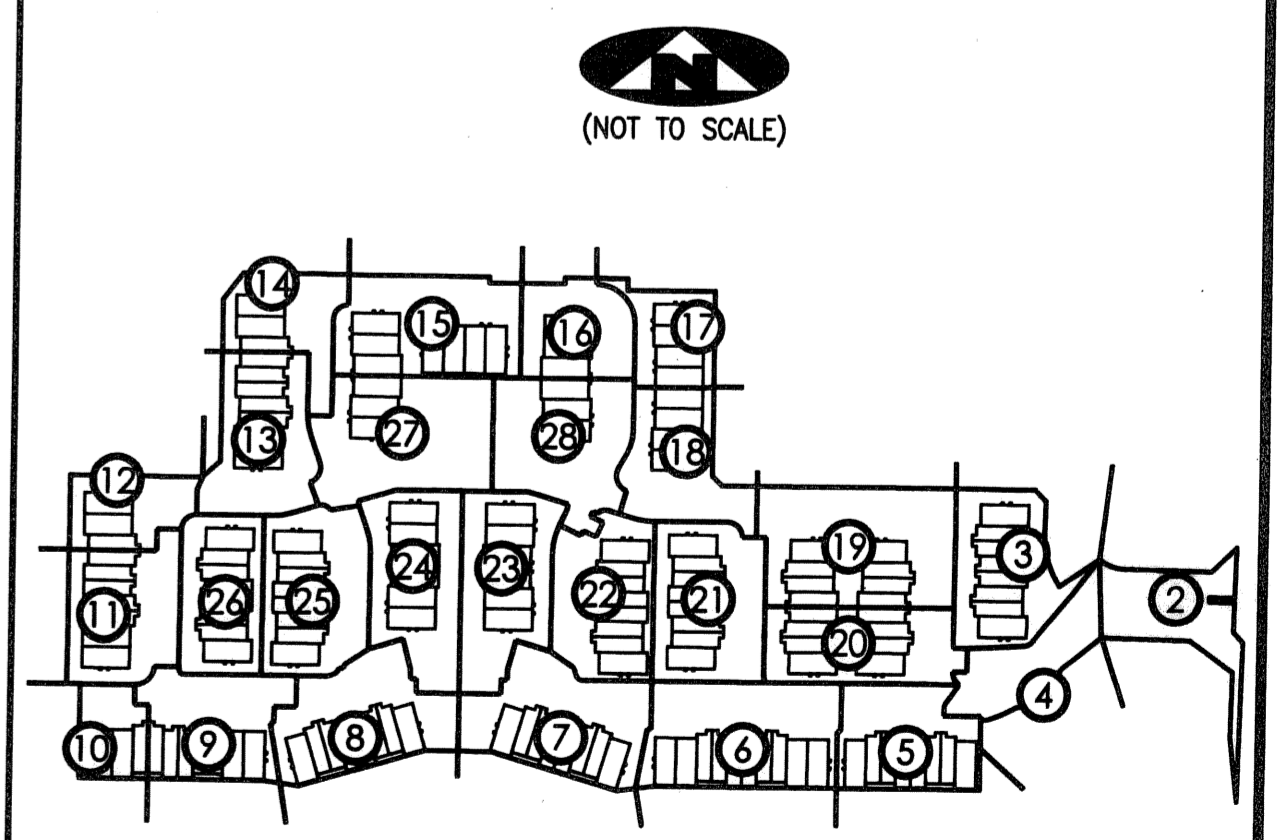
(R)	DENOTES A RADIAL LINE	R	DENOTES RADIUS DISTANCE	⊙	DENOTES A SET PERMANENT CONTROL POINT (LB 7344)	⊠	DENOTES A SET PERMANENT REFERENCE MONUMENT (LB 7344)
C/L	DENOTES A CENTERLINE	L	DENOTES ARC LENGTH DISTANCE	■	DENOTES A FOUND PERMANENT REFERENCE MONUMENT (LB 2171)	⊞	DENOTES A SEACOAST UTILITY EASEMENT (ORB 17773, PAGE 469)
DE	DENOTES DRAINAGE EASEMENT	CA	DENOTES CENTRAL ANGLE	⊞	DENOTES AN INGRESS, EGRESS, DRAINAGE AND UTILITY EASEMENT (PB 103, PAGE 142)		
SUA	DENOTES SEACOAST UTILITY AUTHORITY	LCB	DENOTES LONG CHORD BEARING				
LS	DENOTES LIFT STATION EASEMENT	CHD	DENOTES CHORD DISTANCE				
EAE	DENOTES EMERGENCY ACCESS EASEMENT	ORB	DENOTES OFFICIAL RECORDS BOOK				
		PB	DENOTES PLAT BOOK				

SURVEYOR'S NOTES

1. THE BASE BEARING, AS SHOWN HEREON, IS S01°22'09"W ALONG THE EAST LINE OF TRACT "R", THE SHOPS OF DONALD ROSS REPLAT OF TRACT "A", RECORDED IN PLAT BOOK 103, PAGE 142.
2. IN THOSE INSTANCES WHERE UTILITY OR DRAINAGE STRUCTURES ARE CONSTRUCTED IN CONFLICT WITH THE PLATTED PERMANENT CONTROL POINT POSITION STRADDLERS MONUMENTED AS PERMANENT CONTROL POINTS WILL BE SET TO REFERENCE THE PLATTED POSITION.
3. LINES THAT INTERSECT CURVES ARE NOT RADIAL UNLESS OTHERWISE NOTED.
4. THIS INSTRUMENT WAS PREPARED BY WM. R. VAN CAMPEN, P.S.M. NO. 2424, IN AND FOR THE OFFICES OF ASSOCIATED LAND SURVEYORS, INC., 4152 WEST BLUE HERON BOULEVARD, SUITE 121, RIVIERA BEACH, FLORIDA, 33404

FILE: CIELOPLOT	
FB:	WO.NO.: P238
SCALE: 1"=10'	DATE: 12/25/2004
DWN: KVC	SHEET 22 OF 28

SHEET INDEX



① = DENOTES SHEET NUMBER OF 28

ASSOCIATED LAND SURVEYORS, INC.
 4152 W. BLUE HERON BOULEVARD—SUITE 121
 RIVIERA BEACH FLORIDA 33404 LB NO. 7344
 PHONE: (561) 848-2102 FAX: (561) 844-9659 EMAIL: ALLSURVEY@AOL.COM